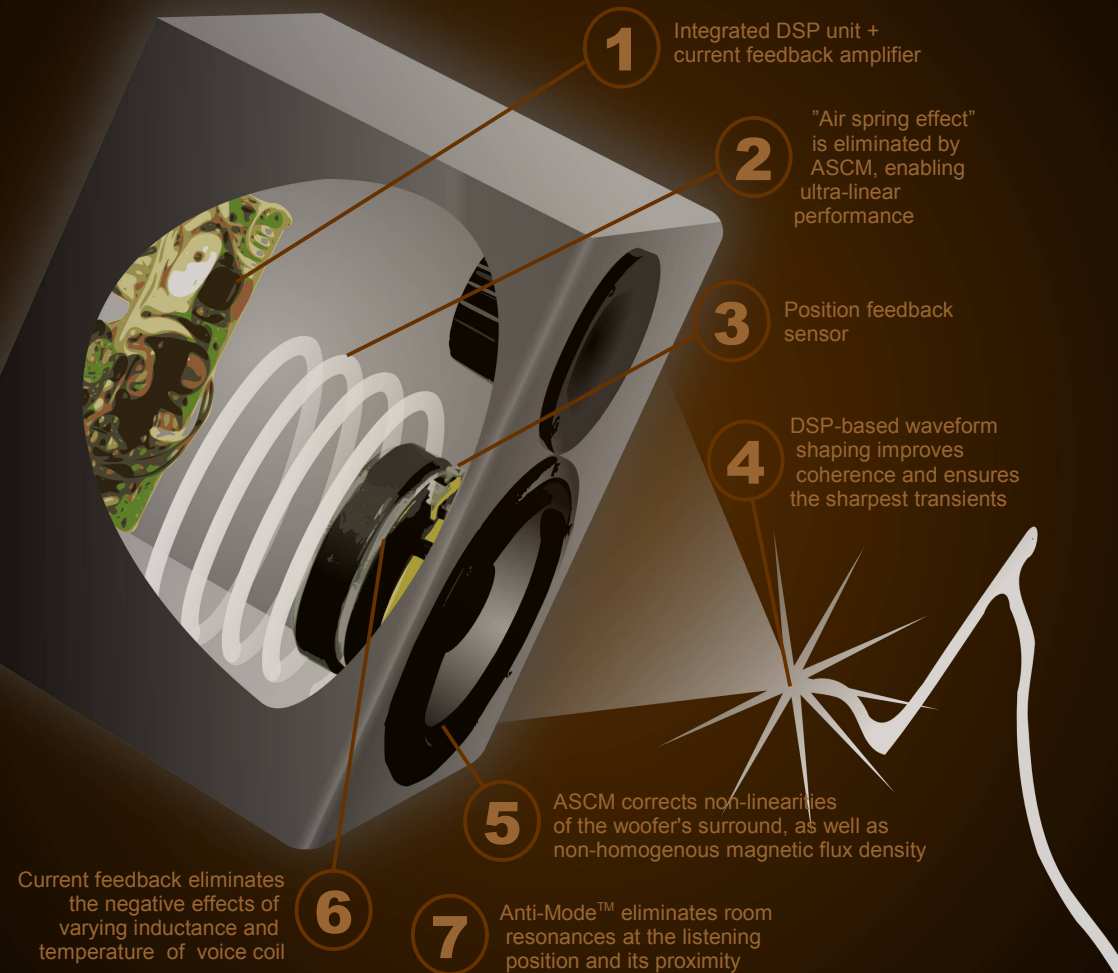


The Perfect Sound Is No Coincidence



DSPeaker SERVO 299L

Looking for the perfect pair of stereo speakers? Building the ultimate high-end home theater? Then look no further - the solution to perfect sound is here!



DSPeaker Servo 299 is a completely new kind of loudspeaker filled with innovation and advanced signal processing technology. If it is the shattering impacts of an action movie or the finest nuances of a musical performance that you're after, Servo 299 delivers beyond expectations.

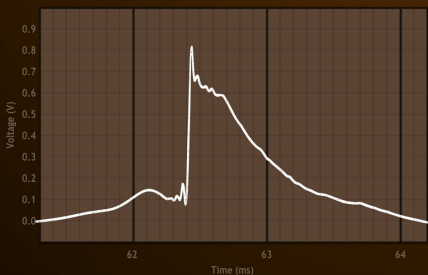
Below are couple of reasons why Servo 299 can be regarded as the most advanced loudspeaker in the world.

Built-in Anti-Mode™ room correction: corrects room resonances ('modes') automatically.

Active Suspension Compliance Management (ASCM): corrects acoustical and mechanical non-linearities of the driver/enclosure combination using electronic compensation.

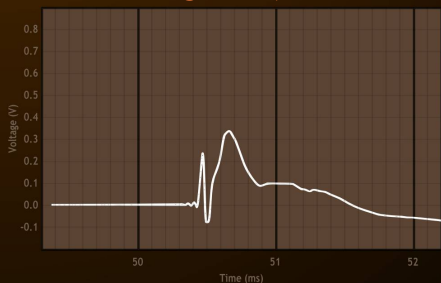
DSP-based waveform shaping: enables transient-perfect sound (see the step response measurements below!)

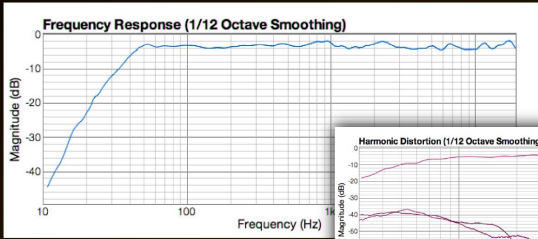
Integrated current feedback amplifier: minimizes intermodulation distortion.



↑ Coherent step response (DSPeaker Servo) indicates sharp transient reproduction

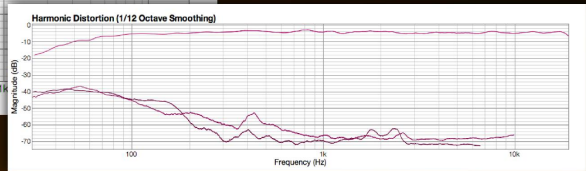
↓ Step response of a typical loudspeaker is far from perfect (notice the difference in maximum magnitude!)





← Frequency response is flat, indicating a truly neutral tonal balance

Harmonic distortion measurement →

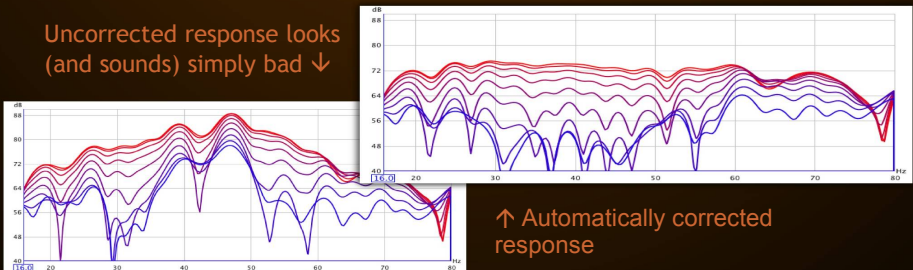


ASCM system allows extending the reproducible frequency range much below that of conventional speakers in the same size class. Servo 299 can go down to 30 Hz without breaking a sweat.

Most loudspeakers that can produce deep bass will reveal an acoustics-related problem: room modes. Untreated room modes can potentially cause serious unwanted "slowness" and "boominess" to the sound. Servo 299 addresses this problem with the highly acclaimed Anti-Mode™ algorithm. Its unparalleled efficiency and ease of use has convinced both the press and demanding home theater enthusiasts around the world.

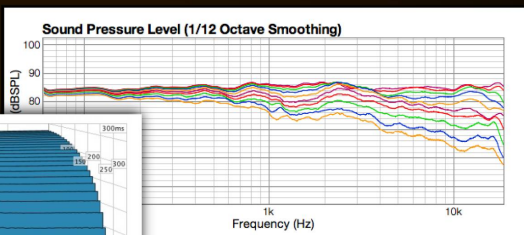
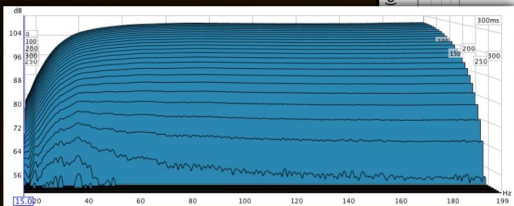
Unlike most equalizers, Anti-Mode™ uses anti-phasing oscillators (along with arbitrarily steep filters) to significantly speed up the decay times of the room modes. Bass playback is always tightly controlled and full of detail!

Uncorrected response looks (and sounds) simply bad ↓



↑ Automatically corrected response

Decay response is free from harmful resonances ↓



↑ Off-axis frequency response measurement (granularity 10°)

Servo loudspeakers are hand-made in Finland. The required position feedback sensors are laser-calibrated for each speaker individually.

The two standard finishes are glossy black and white. Please contact the manufacturer if you need a custom finish!

Also Available

HeaDSpeaker is the first true 5.1 multichannel headphone system in the consumer market. It is based on real-time head tracking and dynamic HRTF auralization. HeaDSpeaker can produce professional-level surround sound to virtually any regular headphones.

The package contains a head tracking sensor (to be used with your existing headphones) and a powerful DSP unit. Suitable for use with or without a computer.

Highly recommended for the ultimate movie experience and serious gaming!

For more information visit
www.DSPEaker.com

"realistic 5.1 movie experience"
Hifimaailma 8/2008

"the most authentic multichannel audio for headphones so far"
MikroBitti 11/2008

